

Portfolio Performance Summary

	All Trades
Net Profit	30.793 €
Gross Profit	107.283 €
Gross Loss	-76.490 €
Return on Initial Capital	61,59
Profit Factor	1,40
Slippage Paid	679 €
Commission Paid	3.618 €
Open Net Profit	0 €
Select Net Profit	28.391 €
Adjusted Net Profit	20.085 €
Max Portfolio Drawdown	-8.570 €
Max Portfolio Drawdown (%)	-12,42
Max Portfolio Close To Close Drawdown	-5.348 €
Max Portfolio Close To Close Drawdown (%)	-7,85
Return on Max Portfolio Drawdown	3,59
Annual Rate of Return	3,22

Portfolio Time Analysis

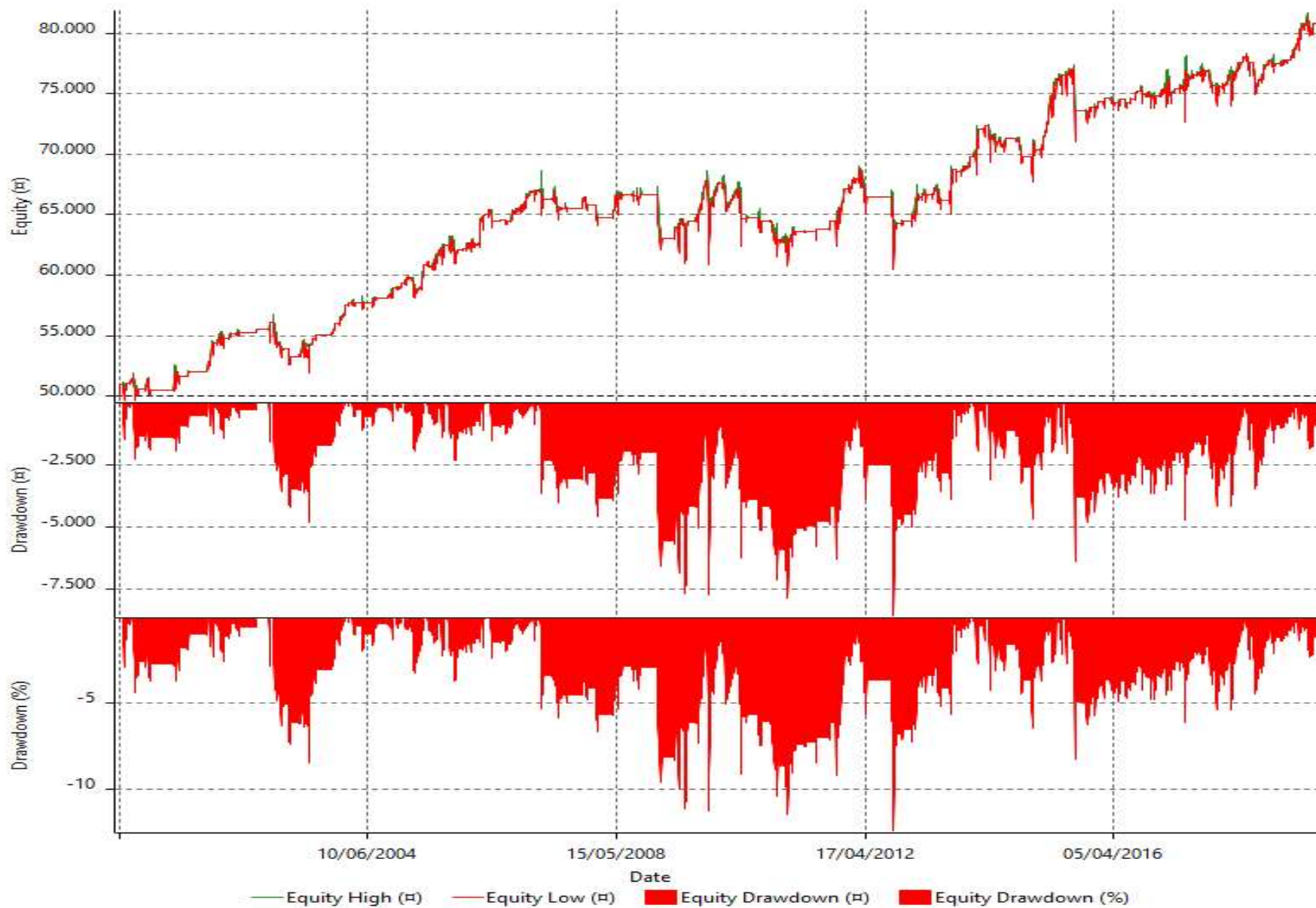
Trading Period	19 Yrs, 1 Mth, 27 Dys
Time in the Market	7 Yrs, 4 Mths, 17 Dys
Percent in the Market	38,50
Longest flat period	4 Mths, 26 Dys
Max Run-up Date	03/05/2019
Max Portfolio Drawdown Date	28/09/2012
Max Close To Close Drawdown Date	25/11/2010

Total Trade Analysis

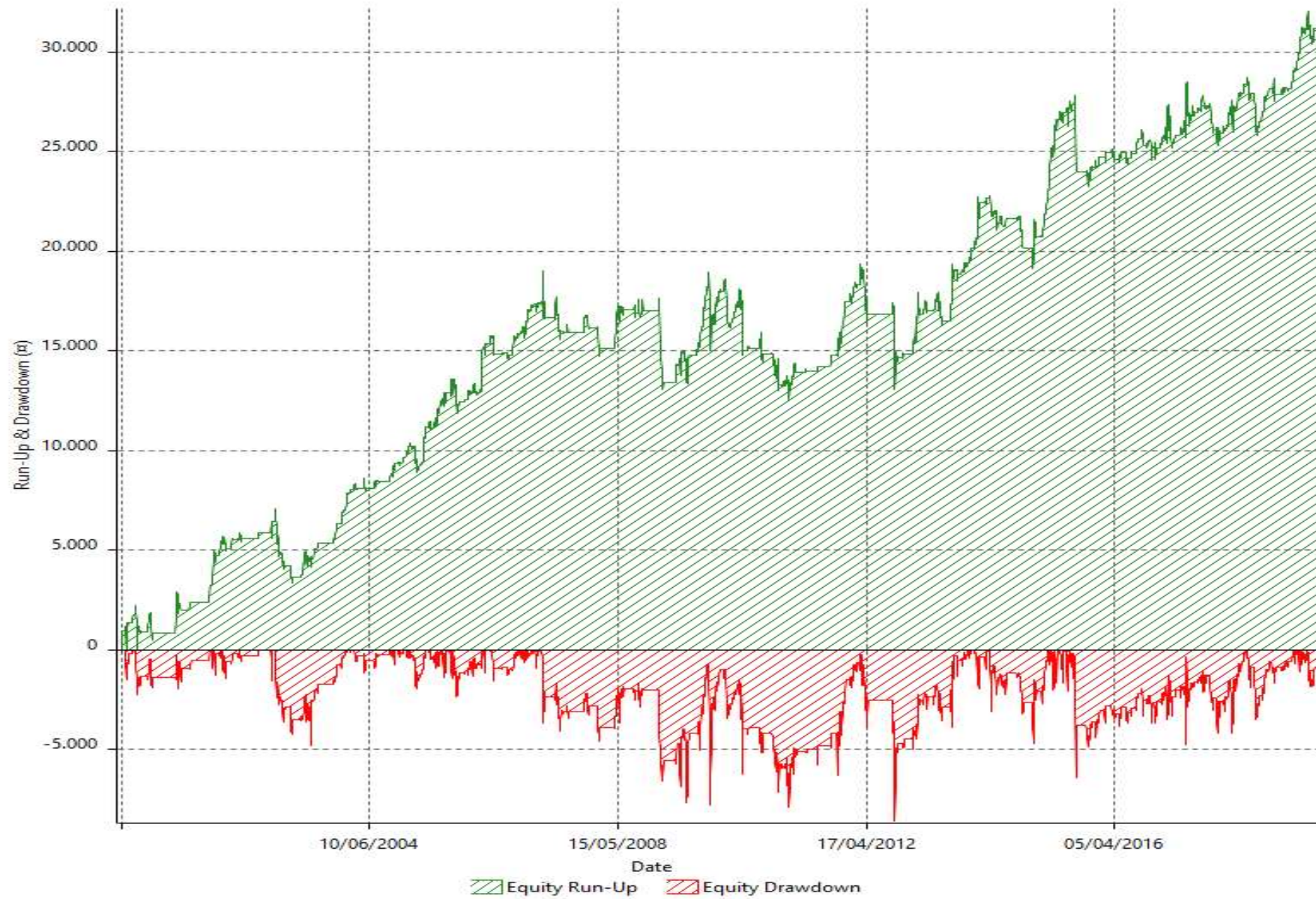
	All Trades
Total N° of Trades	603
Total N° of Open Trades	0
Number Winning Trades	396
Number Losing Trades	207
Percent Profitable	66
Avg Trade (win & loss)	51 €
Average Winning Trade	271 €
Average Losing Trade	-370 €
Ratio Avg Win / Avg Loss	-0,73

*50k di capitale iniziale. Trade effettuati con un controvalore pari a 10k ad operazione. Leva 1:2

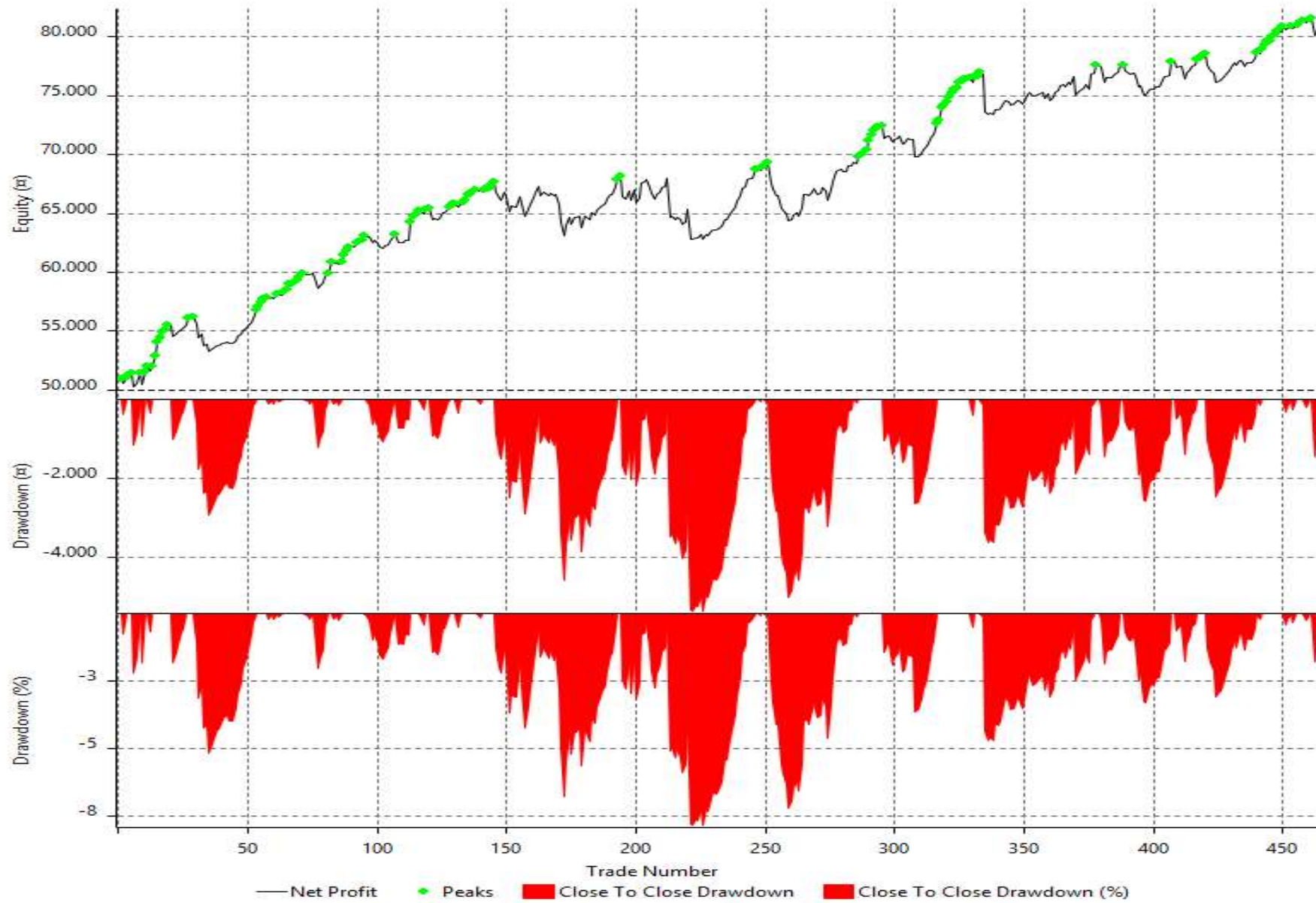
Equity Curve Detailed with DrawDown



Equity Run-up & Drawdown



Equity Curve Close To Close With Drawdown



Portfolio Annual Period Analysis

Period	Net Profit	% Gain	Profit Factor	# Trades	Percent Profitable
2019	3.139 €	6,3%	2,27	29	72,4
2018	2.117 €	4,2%	1,43	41	70,7
2017	651 €	1,3%	1,08	55	61,8
2016	943 €	1,9%	1,43	28	60,7
2015	3.158 €	6,3%	1,53	48	66,7
2014	1.006 €	2,0%	1,18	38	68,4
2013	5.263 €	10,5%	3,05	35	77,1
2012	-2.604 €	-5,2%	-0,54	25	52,0
2011	4.378 €	8,8%	5,21	24	70,8
2010	-4.841 €	-9,7%	-0,47	32	53,1
2009	922 €	1,8%	1,10	43	60,5
2008	850 €	1,7%	1,37	14	64,3
2007	-1.110 €	-2,2%	-0,72	24	50,0
2006	4.528 €	9,1%	2,79	41	80,5
2005	3.097 €	6,2%	1,98	50	58,0
2004	2.962 €	5,9%	7,54	21	71,4
2003	2.202 €	4,4%	1,90	28	75,0
2002	-276 €	-0,6%	-0,91	16	68,8
2001	3.901 €	7,8%	10,59	11	72,7
2000	508 €	1,0%	1,20	11	63,6

Media	Net Profit	% Gain	Profit Factor	# Trades	Percent Profitable
	1.540 €	3,1%	2,15	31	65,9

*50k di capitale, utili mai reinvestiti.